

DataMystic

ResumePipe Pro

Installing MS Word's Conversion and Import Filters

Prepared By



DataMystic

<i>Last Update</i>	:	8-Mar-2005
<i>Print Date</i>	:	17-Jun-2005
<i>Revision</i>	:	1.3
<i>Status</i>	:	Draft
<i>Document</i>	:	word_filters.doc

Public

Table of Contents

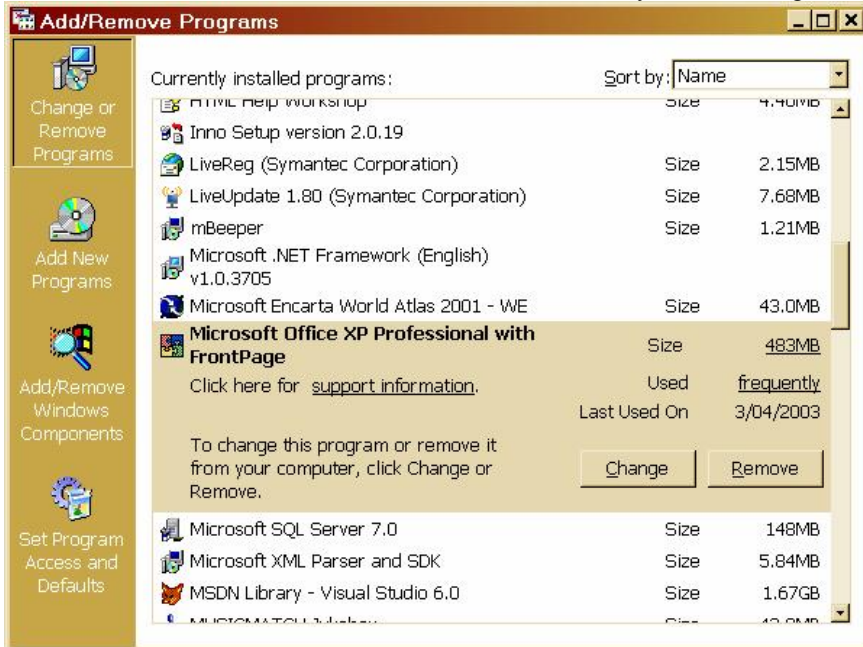
1	INSTALLATION STEPS.....	3
----------	--------------------------------	----------

1 Installation Steps

1. Open Control Panel (usually Start Menu, Settings, Control Panel). Click on Add/Remove Programs



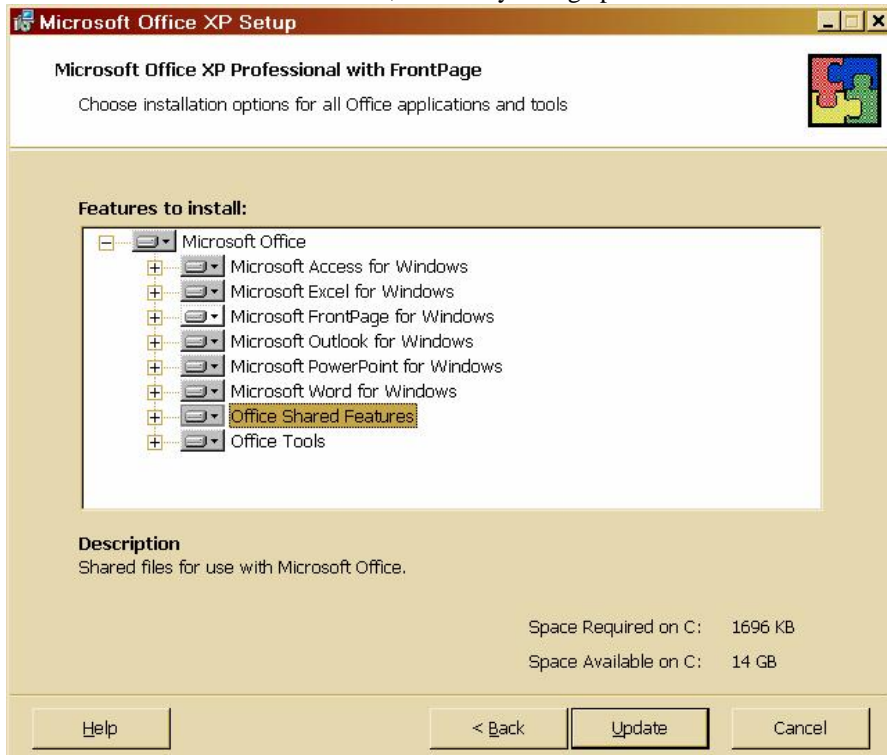
2. Find Microsoft Office or Microsoft Word in the Currently Installed Programs list, and click on change.



3. When the Office installer opens, click on Add or Remove Features.



4. Click on the [-] sign next to Office Shared Features. You need to locate the Converters and Filters group. Usually this is under Office Shared Features, but it may change position from version to version.



5. Click on Converters and Filters



6. Click on the drop down list next to Converters and Filters, and then choose Run All From My Computer.



7. Click on the Update button to install all the filters.